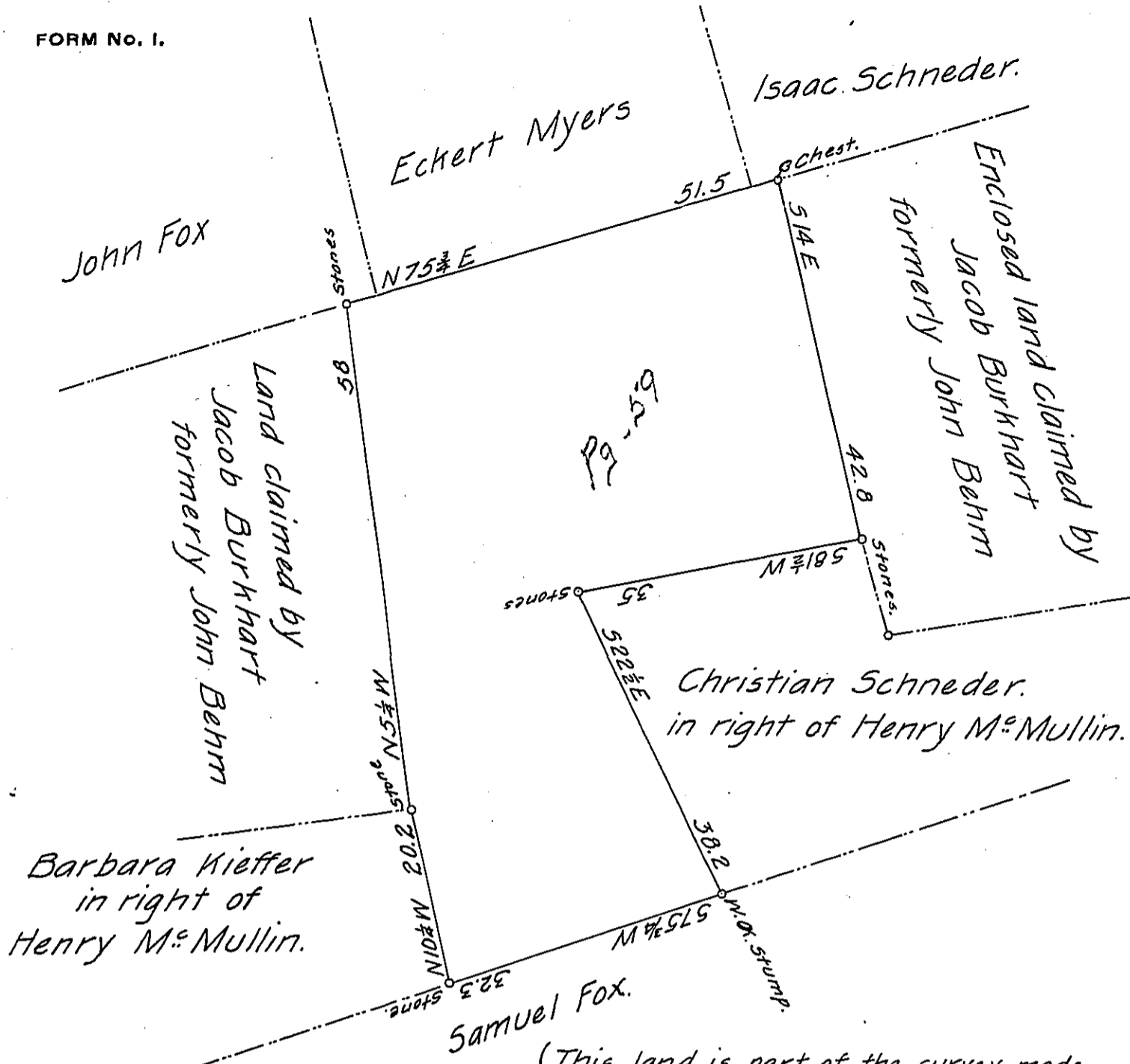


FORM No. 1.



{ This land is part of the survey made
and returned for Jacob Burkhardt.

The above Draught represents a tract of land in Brecknock township, Lancaster County, containing 19 Acres & 40 perches, and the usual allowance of Six per Cent for Roads &c. Surveyed April 26th 1859, in pursuance of a Warrant dated December 6th 1858, granted to John M. Amweg. The above land is wholly unimproved.

John b. Lewis, Surveyor for
Lancaster County.

To John Rowe Esq. }
Surveyor General }

IN TESTIMONY that the above is a copy of the original remaining on file in the Department of Internal Affairs of Pennsylvania, made conformably to an Act of Assembly approved the 16th day of February, 1833, I have hereunto set my Hand and caused the Seal of said Department to be affixed at Harrisburg, this fifth day of February 1906.

Isaac R. Row
Secretary of Internal Affairs.